

METAL-FACH

16-100 SOKÓLKA

ul. KRESOWA 62

**PARTS CATALOGUE
FRONT LOADERS T241**

Table of Contents

1) Loader set	3
2) Extension arm set	5
3) Assembly frame set	8
4) Connector III set	10
5) Connector IV set	11
6) Support foot set	12
7) Levelling indicator set	14
8) Two-section hydraulic system	16
9) Control system for two-section loader	18
10) Solenoid valve unit	20
11) Hydraulic accumulator unit	22

ACCESSORIES FOR FRONT LOADER

12) Ballast box	24
13) Bale grip	25
14) Bale grip version 2	27
15) Bale grip version 3	29
16) Silage grip (version with 1 actuator)	31
17) Silage grip (version with 2 actuators)	34
18) Grip bucket	37
19) Bale fork	40
20) Manure fork	41
21) Silage cutter	42
22) Pallet fork	44

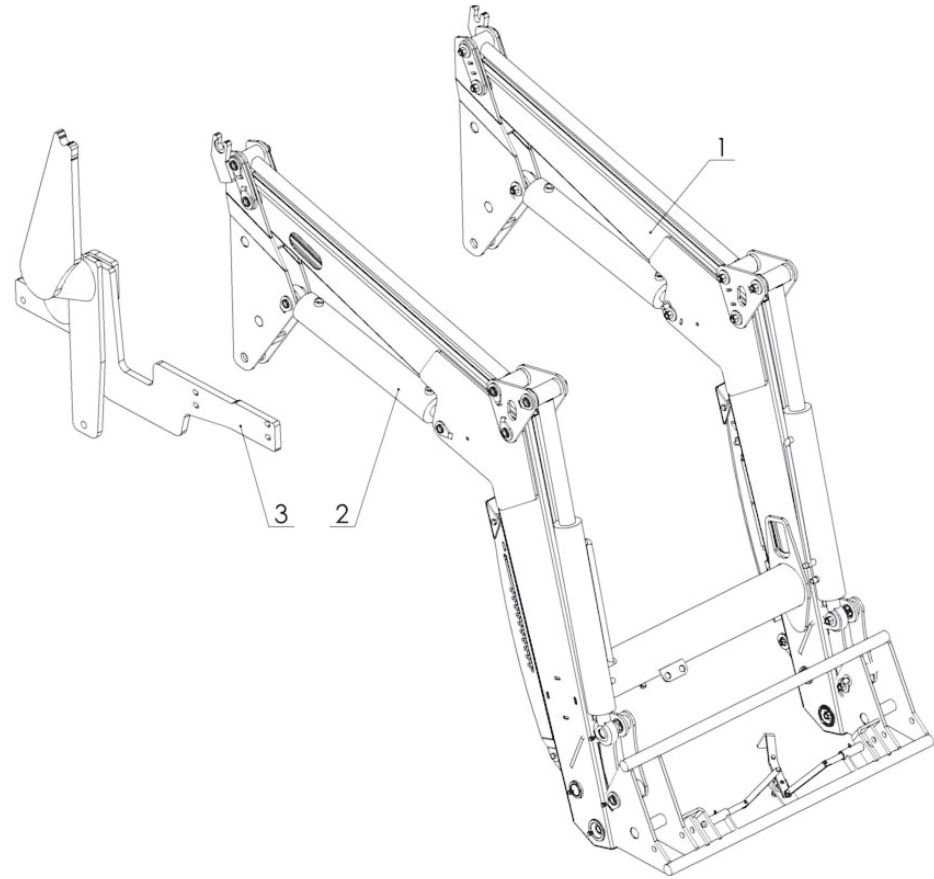


Fig. 1 Loader set

Table no. 1 Loader set

Item	Name of assembly or part	Loader type					
		T241-1		T241-K		T241-D	
		Extension arm type		Extension arm type		Extension arm type	
		Suspended	Run-in	Suspended	Run-in	Suspended	Run-in
1	Extension arm set	T241-1	T241-N1	T241-K	T241-NK	T241-D	T241-ND
2	Hydraulic system						
3	Frame mounted on tractor						

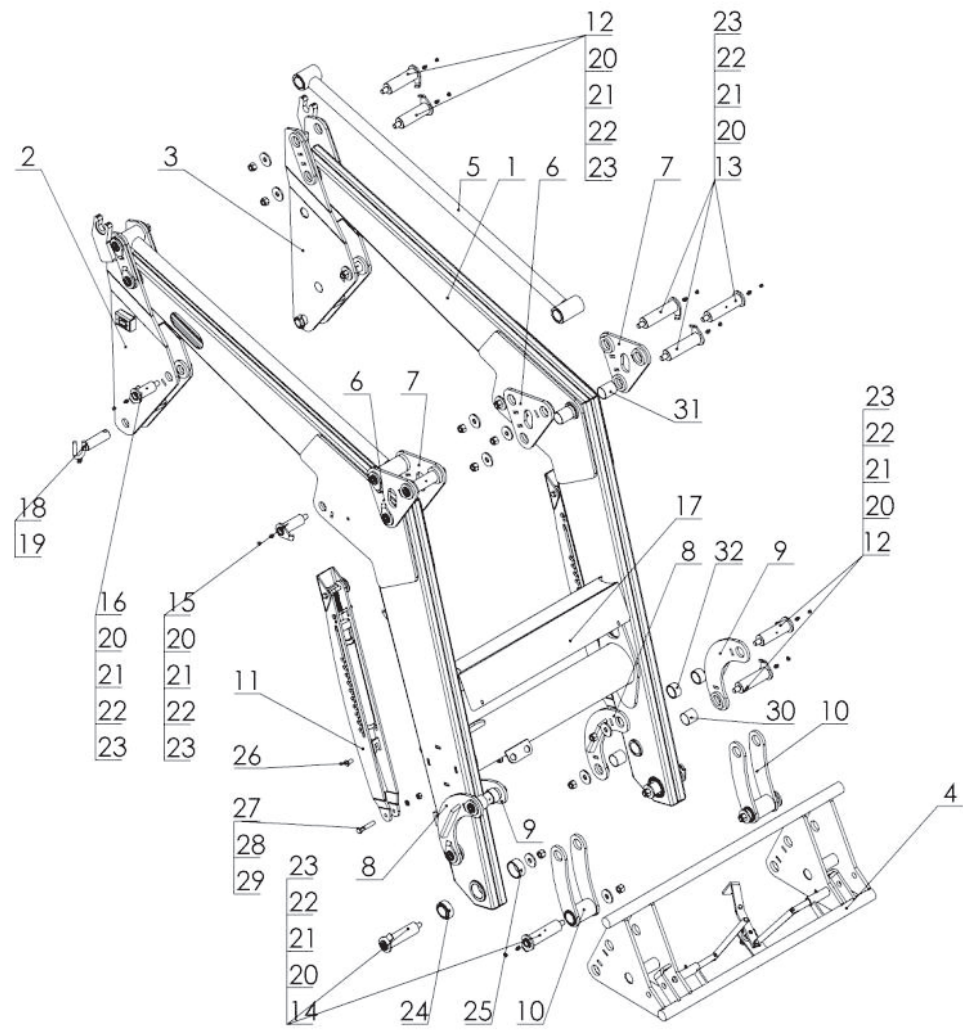


Fig. 2 Extension arm set

Table no. 2 Extension arm set

Item	Name of part or assembly	Part number or index						Qty
		Loader type						
		T241-1	T241-N1	T241-K	T241-K1	T241-D	T241-ND	
1	Extension arm set	T241-1.001.000.000	T241-1.001.000.000	T241-K.001.000.000	T241-K.001.000.000	T241-D.001.000.000	T241-D.001.000.000	1
2	Lifting sling complete, right	T241-1.002.001.000	T241-1.020.100.000	T241-1.002.001.000	T241-1.020.100.000	T241-1.002.001.000	T241-1.020.100.000	1
3	Lifting sling complete, left	T241-1.002.002.000	T241-1.020.200.000	T241-1.002.002.000	T241-1.020.200.000	T241-1.002.002.000	T241-1.020.200.000	1
4	EURO frame complete	T241-1.004.000.000.1	T241-1.004.000.000.1	T241-K.004.000.000.1	T241-K.004.000.000.1	T241-K.004.000.000.1	T241-K.004.000.000.1	1
5	Fastener I, set	T241-1.005.000.000	T241-1.005.000.000	T241-1.005.000.000	T241-1.005.000.000	T241-D.005.000.000	T241-D.005.000.000	2
6	Lever I, set	T241-1.006.001.000	T241-1.006.001.000	T241-1.006.001.000	T241-1.006.001.000	T241-1.006.001.000	T241-1.006.001.000	2
7	Lever II, set	T241-1.006.002.000	T241-1.006.002.000	T241-1.006.002.000	T241-1.006.002.000	T241-1.006.002.000	T241-1.006.002.000	2
8	Lever III set	T241-1.007.001.000	T241-1.007.001.000	T241-1.007.001.000	T241-1.007.001.000	T241-1.007.001.000	T241-1.007.001.000	2
9	Lever IV, set	T241-1.007.002.000	T241-1.007.002.000	T241-1.007.002.000	T241-1.007.002.000	T241-1.007.002.000	T241-1.007.002.000	2
10	Fastener II, set	T241-1.008.000.000	T241-1.008.000.000	T241-1.008.000.000	T241-1.008.000.000	T241-1.008.000.000	T241-1.008.000.000	2
11	Support I, set	T241-1.009.001.000	T241-1.009.001.000	T241-1.009.001.000	T241-1.009.001.000	T241-1.009.001.000	T241-1.009.001.000	2
12	Pin I, set	T241-1.010.001.000	T241-1.010.001.000	T241-1.010.001.000	T241-1.010.001.000	T241-1.010.001.000	T241-1.010.001.000	8
13	Pin II set	T241-1.010.002.000	T241-1.010.002.000	T241-1.010.002.000	T241-1.010.002.000	T241-1.010.002.000	T241-1.010.002.000	6
14	Pin IV, set	T241-1.010.004.000	T241-1.010.004.000	T241-1.010.004.000	T241-1.010.004.000	T241-1.010.004.000	T241-1.010.004.000	4
15	Pin V, set	T241-1.010.005.000	T241-1.010.005.000	T241-1.010.005.000	T241-1.010.005.000	T241-1.010.005.000	T241-1.010.005.000	2
16	Pin VI, set	T241-1.010.006.000	T241-1.010.006.000	T241-1.010.006.000	T241-1.010.006.000	T241-1.010.006.000	T241-1.010.006.000	2
17	Front guard	T241-1.000.000.015	T241-1.000.000.015	T241-K.000.000.015	T241-K.000.000.015	T241-K.000.000.015	T241-K.000.000.015	1
18	Locking pin set	25ST-229-1 000.029.000		25ST-229-1 000.029.000		25ST-229-1 000.029.000		2
19	Farming cotter pin	23PR11		23PR11		23PR11		2

20	Grease nipple, M10x1	23SM10/1	23SM10/1	23SM10/1	23SM10/1	23SM10/1	23SM10/1	22
21	Protective cap	23KOC	23KOC	23KOC	23KOC	23KOC	23KOC	22
22	Special washer dia. 17x50x6	POD-ELZ-000455	POD-ELZ-000455	POD-ELZ-000455	POD-ELZ-000455	POD-ELZ-000455	POD-ELZ-000455	22
23	Self-locking nut, M16	23NS16OC	23NS16OC	23NS16OC	23NS16OC	23NS16OC	23NS16OC	22
24	Self-aligning bearing	25L040GE	25L040GE	25L040GE	25L040GE	25L040GE	25L040GE	4
25	Locking bushing	T241-1.001.001.006	T241-1.001.001.006	T241-1.001.001.006	T241-1.001.001.006	T241-1.001.001.006	T241-1.001.001.006	4
26	Cone head bolt 12x25 galv.	POD-ELZ-000482	POD-ELZ-000482	POD-ELZ-000482	POD-ELZ-000482	POD-ELZ-000482	POD-ELZ-000482	2
27	Bolt, M12x70	23S12/70OC 8.8	23S12/70OC 8.8	23S12/70OC 8.8	23S12/70OC 8.8	23S12/70OC 8.8	23S12/70OC 8.8	2
28	Round washer 13	23P12OC	23P12OC	23P12OC	23P12OC	23P12OC	23P12OC	2
29	Self-locking nut 12	23NS12OC	23NS12OC	23NS12OC	23NS12OC	23NS12OC	23NS12OC	2
30	Self-lubricating bush PAP4040	25TSPAP4040	25TSPAP4040	25TSPAP4040	25TSPAP4040	25TSPAP4040	25TSPAP4040	4
31	Self-lubricating bush PAP4050	25TSPAP4050	25TSPAP4050	25TSPAP4050	25TSPAP4050	25TSPAP4050	25TSPAP4050	4
32	Distance bush	T241-1.000.000.013	T241-1.000.000.013	T241-1.000.000.013	T241-1.000.000.013	T241-1.000.000.013	T241-1.000.000.013	4

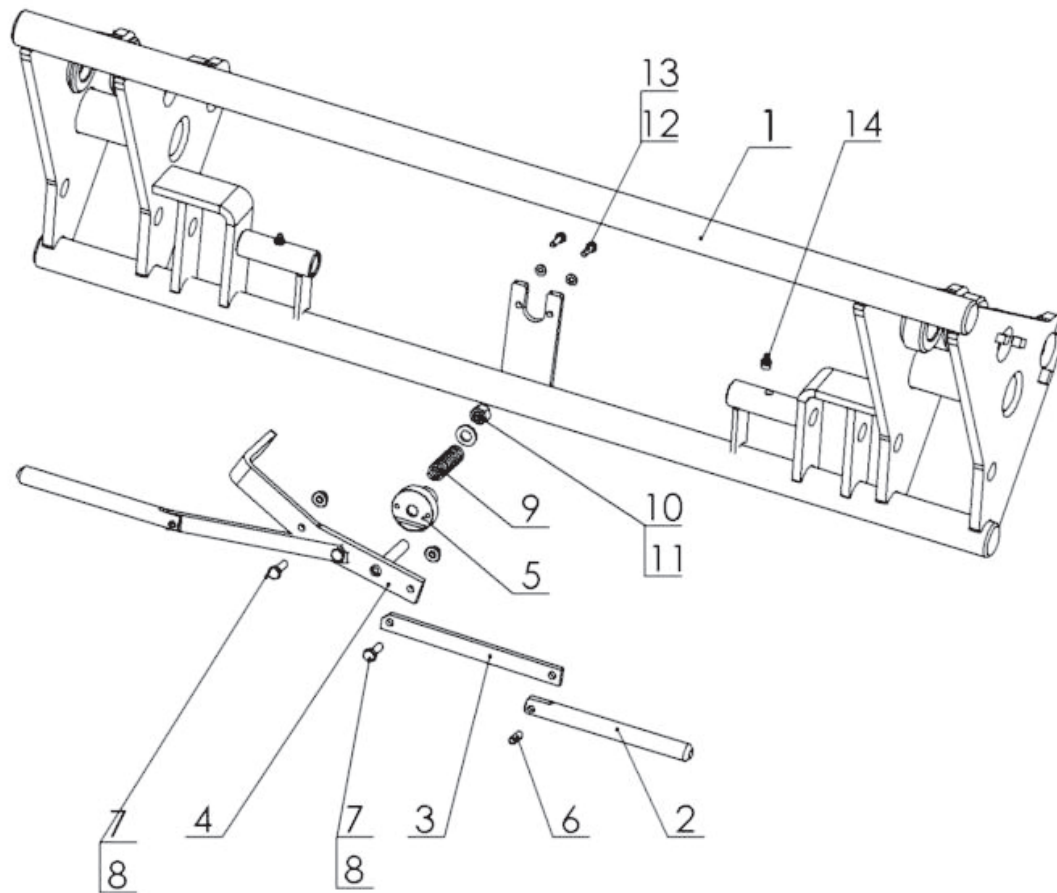


Fig. 3 Assembly frame set

Table no. 4 Assembly frame set

Item	Name of assembly or part	Part number or index						Qty
		Loader type						
		T241-1	T241-N1	T241-K	T241-NK	T241-D	T241-ND	
1	Welded frame	T241-1.004.001.000.1	T241-1.004.001.000.1	T241-K.004.001.000.1	T241-K.004.001.000.1	T241-K.004.001.000.1	T241-K.004.001.000.1	1
2	Pin	T229-1.008.002.003	T229-1.080.002.003	T229-1.008.002.003	T229-1.080.002.003	T229-1.008.002.003	T229-1.080.002.003	2
3	Arm II	T229-1.008.002.002	T229-1.008.002.002	T229-1.008.002.002	T229-1.008.002.002	T229-1.008.002.002	T229-1.008.002.002	2
4	Arm I	T229-.008.002.100.1	T229-.008.002.100.1	T229-.008.002.100.1	T229-.008.002.100.1	T229-.008.002.100.1	T229-.008.002.100.1	1
5	Holder	T229-1.008.002.004	T229-1.008.002.004	T229-1.008.002.004	T229-1.008.002.004	T229-1.008.002.004	T229-1.008.002.004	1
6	Spring pin	23K8/25	POD-ELZ-000347	23K8/25	POD-ELZ-000347	23K8/25	POD-ELZ-000347	2
7	Bolt, M8x25	23S8/25OC8.8	23S8/25OC8.8	23S8/25OC8.8	23S8/25OC8.8	23S8/25OC8.8	23S8/25OC8.8	3
8	Self-locking nut, M8	23NS8OC	23NS8OC	23NS8OC	23NS8OC	23NS8OC	23NS8OC	3
9	Spring	23S3/12.5/60	23S3/12.5/60	23S3/12.5/60	23S3/12.5/60	23S3/12.5/60	23S3/12.5/60	1
10	Self-locking nut, M12	23NS12OC	23NS12OC	23NS12OC	23NS12OC	23NS12OC	23NS12OC	1
11	Round washer 13	23P12OC	23P12OC	23P12OC	23P12OC	23P12OC	23P12OC	1
12	Bolt, M6x20	23S6/20	23S6/20	23S6/20	23S6/20	23S6/20	23S6/20	2
13	Round washer 6.4	23P6OOC	23P6OOC	23P6OOC	23P6OOC	23P6OOC	23P6OOC	2
14	Grease nipple, M10x1	NONE	23SM10/1	NONE	23SM10/1	NONE	23SM10/1	2

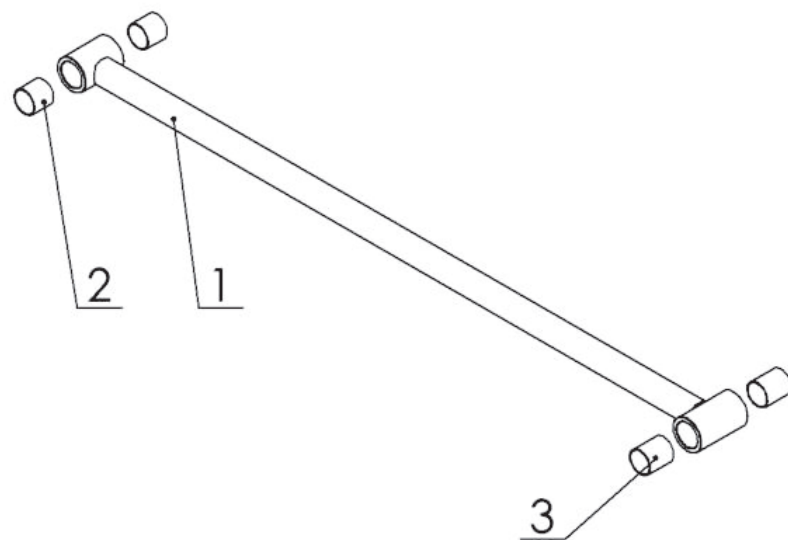


Fig. 4 Connector I set

Table no. 4 Connector I set

Item	Name of assembly or part	Part number or index						Qty
		Loader type						
		T241-1	T241-N1	T241-K	T241-NK	T241-D	T241-ND	
1	Fastener I	T241-1.005.001.000	T241-1.005.001.000	T241-1.005.001.000	T241-1.005.001.000	T241-D.005.001.000	T241-D.005.001.000	1
2	Self-lubricating bush I	25TSPAP4040	25TSPAP4040	25TSPAP4040	25TSPAP4040	25TSPAP4040	25TSPAP4040	2
3	Self-lubricating bush II	25TSPAP4050	25TSPAP4050	25TSPAP4050	25TSPAP4050	25TSPAP4050	25TSPAP4050	2

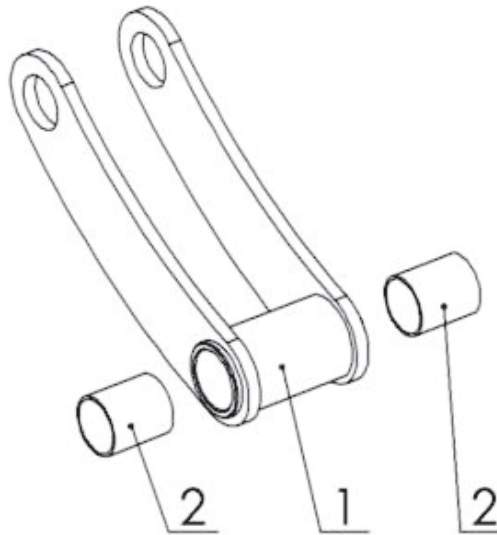


Fig. 5 Connector II set

Table no. 5 Connector II set

Item	Name of assembly or part	Part number or index						Qty
		Loader type						
		T241-1	T241-N1	T241-K	T241-NK	T241-D	T241-ND	
1	Fastener II	T241-1.008.001.000	T241-1.008.001.000	T241-1.008.001.000	T241-1.008.001.000	T241-1.008.001.000	T241-1.008.001.000	1
2	Self-lubricating bush	25TSPAP4050	25TSPAP4050	25TSPAP4050	25TSPAP4050	25TSPAP4050	25TSPAP4050	2

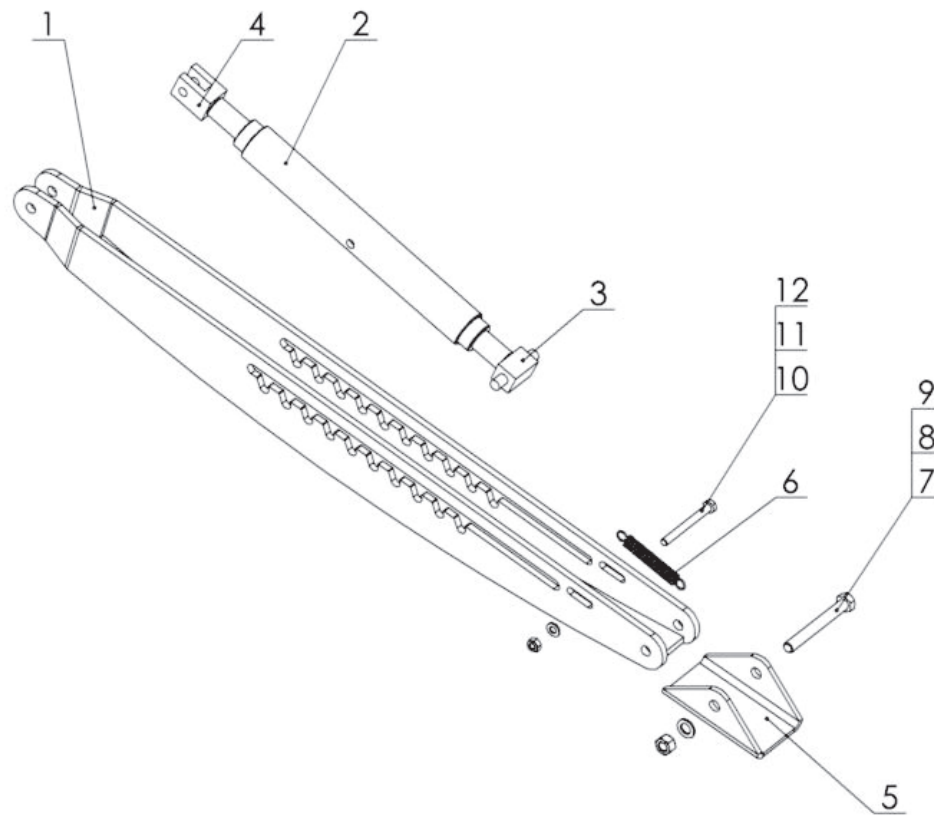


Fig. 6 Support I, set

Table no. 6 Support I, set

Item	Name of assembly or part	Part number or index						Qty
		Loader type						
		T241-1	T241-N1	T241-K	T241-NK	T241-D	T241-ND	
1	Support	T241-1.009.001.100	T241-1.009.001.100	T241-1.009.001.100	T241-1.009.001.100	T241-1.009.001.100	T241-1.009.001.100	1
2	Threaded sleeve	T241-1.009.001.210	T241-1.009.001.210	T241-1.009.001.210	T241-1.009.001.210	T241-1.009.001.210	T241-1.009.001.210	1
3	Foot bolt I	T241-1.009.001.220	T241-1.009.001.220	T241-1.009.001.220	T241-1.009.001.220	T241-1.009.001.220	T241-1.009.001.220	1
4	Foot bolt II	T241-1.009.001.230	T241-1.009.001.230	T241-1.009.001.230	T241-1.009.001.230	T241-1.009.001.230	T241-1.009.001.230	1
5	Foot	T241-1.009.001.003	T241-1.009.001.003	T241-1.009.001.003	T241-1.009.001.003	T241-1.009.001.003	T241-1.009.001.003	1
6	Spring	23SN1.5/13/90	23SN1.5/13/90	23SN1.5/13/90	23SN1.5/13/90	23SN1.5/13/90	23SN1.5/13/90	1
7	Bolt, M12x100	23S12/100OC 8.8	23S12/100OC 8.8	23S12/100OC 8.8	23S12/100OC 8.8	23S12/100OC 8.8	23S12/100OC 8.8	1
8	Round washer 13	23P12OC	23P12OC	23P12OC	23P12OC	23P12OC	23P12OC	1
9	Self-locking nut, M12	23NS12OC	23NS12OC	23NS12OC	23NS12OC	23NS12OC	23NS12OC	1
10	Bolt, M8x80	23S8/80 8.8	23S8/80 8.8	23S8/80 8.8	23S8/80 8.8	23S8/80 8.8	23S8/80 8.8	1
11	Round washer, 8.4	23P8OOC	23P8OOC	23P8OOC	23P8OOC	23P8OOC	23P8OOC	1
12	Self-locking nut, M8	23NS8OC	23NS8OC	23NS8OC	23NS8OC	23NS8OC	23NS8OC	1

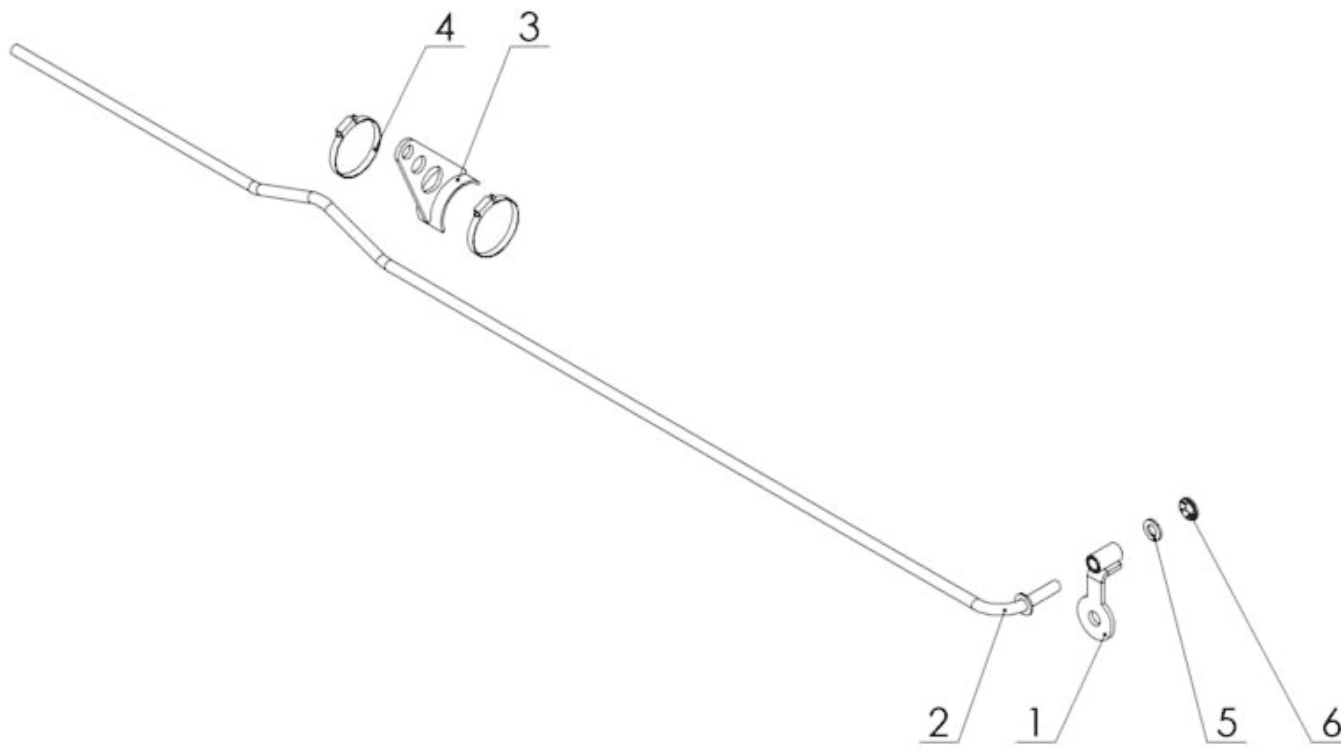


Fig. 7. Levelling indicator set

Table no. 7 Levelling indicator set

Item	Name of assembly or part	Part number or index						Qty
		Loader type						
		T229-100	T229-110	T229-K00	T229-K10	T229-D00	T229-D10	
1	Bracket I	T229-1 051.001.000	T229-1 051.001.000	T229-1 051.001.000	T229-1 051.001.000	T229-1 051.001.000	T229-1 051.001.000	1
2	Indicator pipe	T229-1 051.002.000	T229-1 051.002.000	T229-1 051.002.000	T229-1 051.002.000	T229-1 051.002.000	T229-1 051.002.000	1
3	Bracket II	T229-1 051.003.000	T229-1 051.003.000	T229-1 051.003.000	T229-1 051.003.000	T229-1 051.003.000	T229-1 051.003.000	1
4	Worm band	POD-OGL-000361	POD-OGL-000361	POD-OGL-000361	POD-OGL-000361	POD-OGL-000361	POD-OGL-000361	2
5	Round washer, 12	23P12OC	23P12OC	23P12OC	23P12OC	23P12OC	23P12OC	1
6	Spring protection	POD-ELZ-000494	POD-ELZ-000494	POD-ELZ-000494	POD-ELZ-000494	POD-ELZ-000494	POD-ELZ-000494	1

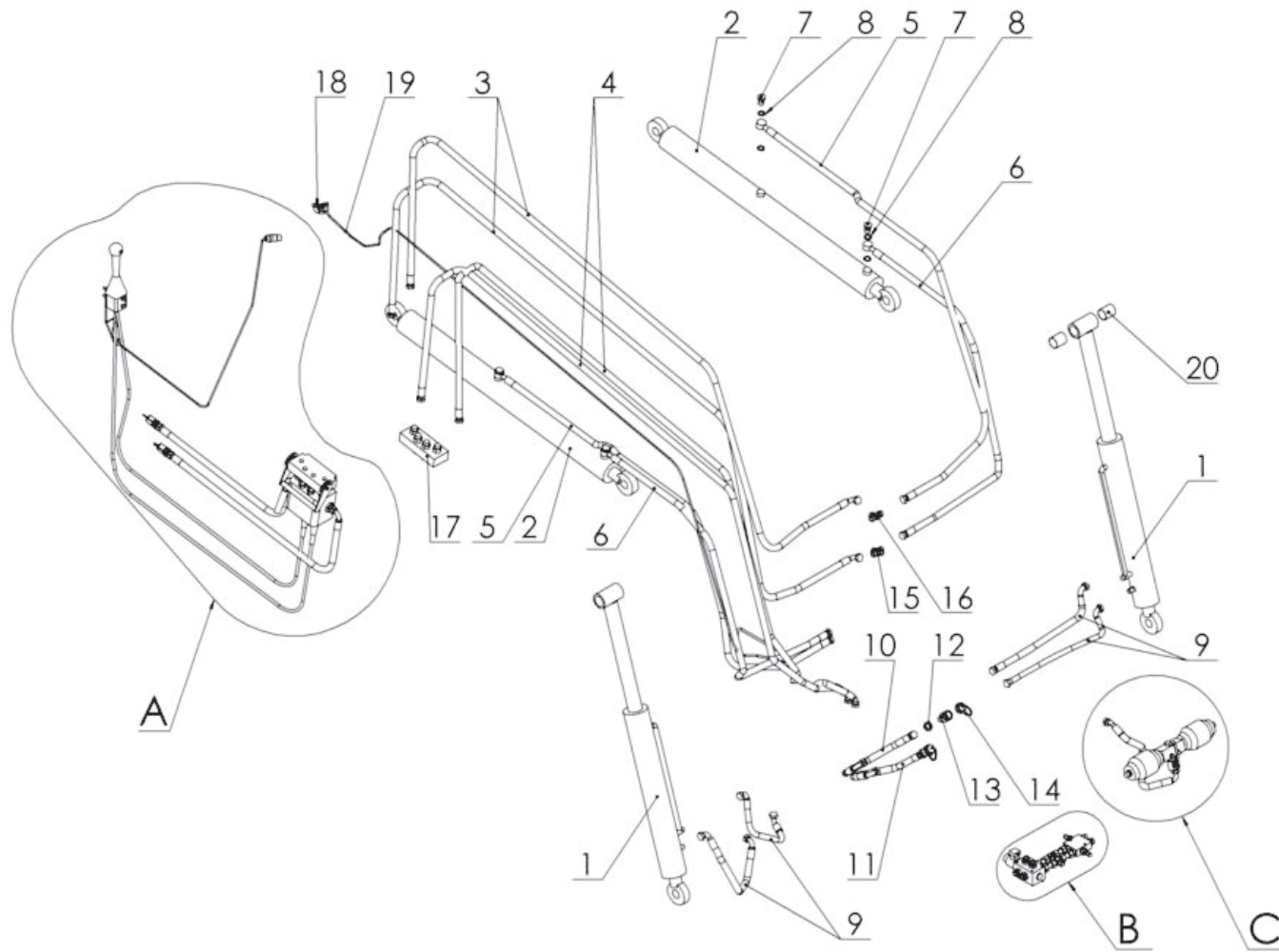


Fig. 8 Hydraulic system

Table no. 8. Hydraulic system.

Item	Name of assembly or part	Part number or index					Qty
		Loader type					
		T241-1 lifting capacity 1300 kg	T241-1 lifting capacity 1600 kg	T241-K lifting capacity 1300 kg	T241-K lifting capacity 1600 kg	T241-D lifting capacity 1600 kg	
1	Frame actuator	24SCJ1.70/36*400	POD-HSL-000002-1	24SCJ1.70/36*400	POD-HSL-000002-1	POD-HSL-000002-1	2
2	Extension arm actuator	24SCJ2.70/40*520	POD-HSL-000001-1	24SCJ2.70/40*520	POD-HSL-000001-1	POD-HSL-000005-1	2
3	Hydraulic line	POD-HPR-000148	POD-HPR-000148	POD-HPR-000148	POD-HPR-000148	POD-HPR-000184	2
4	Hydraulic line	POD-HPR-000122	POD-HPR-000122	POD-HPR-000122	POD-HPR-000122	POD-HPR-000185	2
5	Hydraulic line	POD-HPR-000189	POD-HPR-000189	POD-HPR-000124	POD-HPR-000124	POD-HPR-000124	2
6	Hydraulic line	POD-HPR-000188	POD-HPR-000188	POD-HPR-000123	POD-HPR-000123	POD-HPR-000123	2
7	Hydraulic screw	POD-HPZ-000011-1	POD-HPZ-000011-1	POD-HPZ-000011-1	POD-HPZ-000011-1	POD-HPZ-000011-1	4
8	Copper washer	24U20	24U20	24U20	24U20	24U20	8
9	Hydraulic line	POD-HPR-000126	POD-HPR-000126	POD-HPR-000126	POD-HPR-000126	POD-HPR-000126	4
10	Hydraulic line	POD-HPR-000129	POD-HPR-000129	POD-HPR-000129	POD-HPR-000129	POD-HPR-000129	1
11	Hydraulic line	POD-HPR-000128	POD-HPR-000128	POD-HPR-000128	POD-HPR-000128	POD-HPR-000128	1
12	Lock nut	24P22/1.5	24P22/1.5	24P22/1.5	24P22/1.5	24P22/1.5	2
13	Euro valve-socket	POD-HZW-000040	POD-HZW-000040	POD-HZW-000040	POD-HZW-000040	POD-HZW-000040	2
14	Valve protection	24P22/1.5	24P22/1.5	24P22/1.5	24P22/1.5	24P22/1.5	2
15	Tee connector M22x1.5	POD-HKR-000007-1	POD-HKR-000007-1	POD-HKR-000007-1	POD-HKR-000007-1	POD-HKR-000007-1	1
16	Four-way piece connector M22x1.5	POD-HKR-000003-1	POD-HKR-000003-1	POD-HKR-000003-1	POD-HKR-000003-1	POD-HKR-000003-1	1
17	Quick-release coupling	POD-HZW-000034	POD-HZW-000034	POD-HZW-000034	POD-HZW-000034	POD-HZW-000034	1
18	Electrical socket	POD-ELK-000197	POD-ELK-000197	POD-ELK-000197	POD-ELK-000197	POD-ELK-000197	1
19	Wire harness	POD-ELK-000194	POD-ELK-000194	POD-ELK-000194	POD-ELK-000194	POD-ELK-000195	1
20	Self-lubricating bush	25TSPAP4050	25TSPAP4050	25TSPAP4050	25TSPAP4050	25TSPAP4050	4

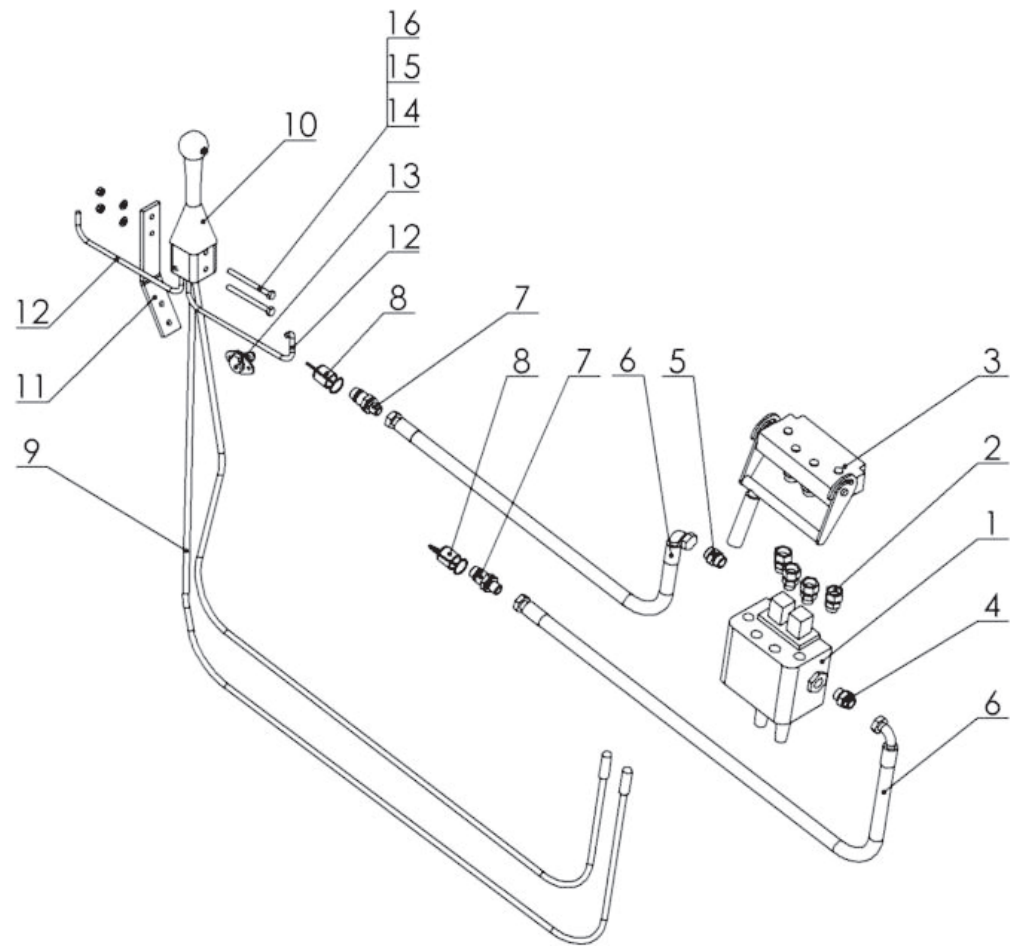


Fig. 9 Control system for loader (assembly "A")

Table no. 9. Control system for loader (assembly “A”).

Item	Name of assembly or part	Part number or index	Qty
1	Hydraulic separator	24RCV452	1
2	Straight coupling 1/2 ext. M22x1.5 dia. 15, female	24PP1/2 M22/1.5 FI15	4
3	Quick-release coupling	POD-HZW-000033	1
4	Stud coupling, 3/4”x M22x1.5	POD-HKR-000050	1
5	Stud coupling, 1/2” x M22x1.5	24K1/2 22	1
6	Hydraulic hose	24PA90A/233/13-3000	2
7	Euro valve-plug	24ZWE13	2
8	Valve-plug protection	24ZWNE13	2
9	Control cable (ball tip)	POD-HPZ-000039-1	2
10	Joystick (ball tip)	POD-HPZ-000038-1	1
11	Joystick bracket	T229-1 000.000.101.1	1
12	Wire harness	POD-ELK-000003-1	1
13	Electrical plug	POD-ELK-000198	1
14	Bolt, M8x100	23S8/100	2
15	Round washer, 8.4	23P8OOC	2
16	Self-locking nut, M8	23NS8OC	2

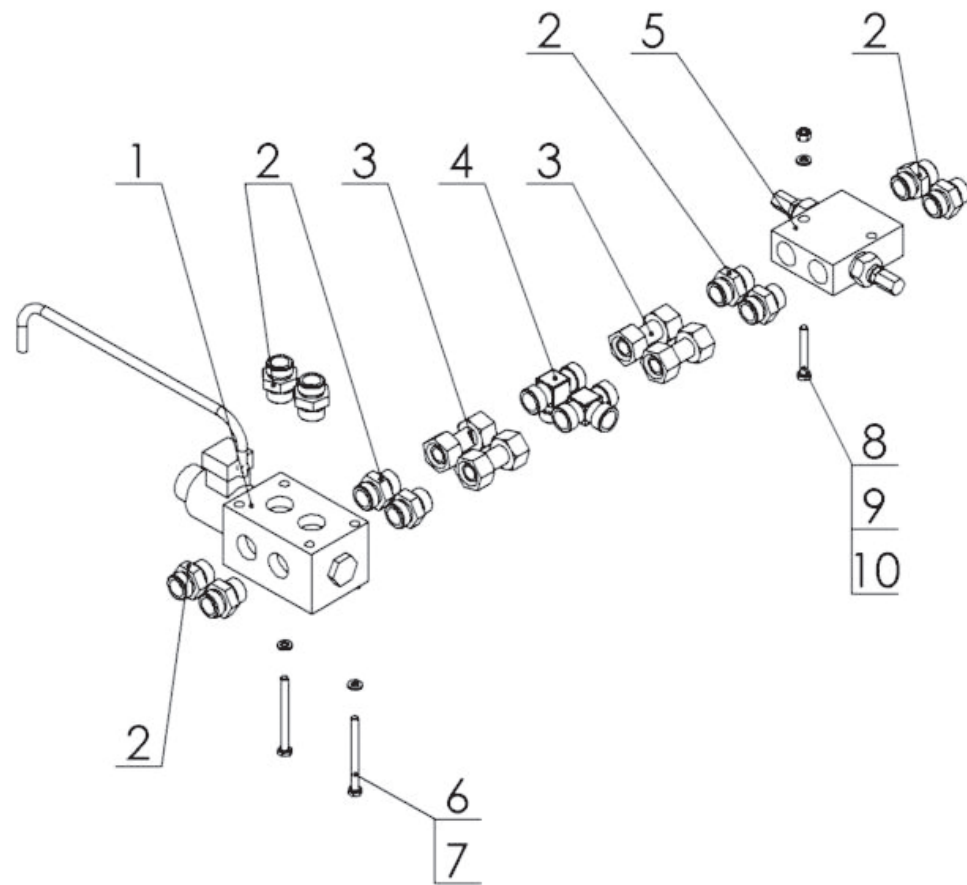


Fig. 10. Solenoid valve unit ("B" assembly)

Table no. 10. Solenoid valve unit ("B" assembly).

Item	Name of assembly or part	Part number or index	Qty
1	Divider	24DE	1
2	Straight coupling 1/2"/M22x1.5	24K1/2 22	10
3	Screwed-in straight coupling M22x1.5	POD-HKR-000008-1	4
4	Tee connector 3xM22x1.5	POD-HKR-000007-1	2
5	Overflow valve	24ZP	1
6	Bolt, M6x70	23S6/70 105	2
7	Round washer 6.4	23P6SPOC	2
8	Bolt, M8x55	23S8/55OC 8.8	1
9	Round washer, 8.4	23S8/55OC 8.8	1
10	Nut, M8	23NS8OC	1

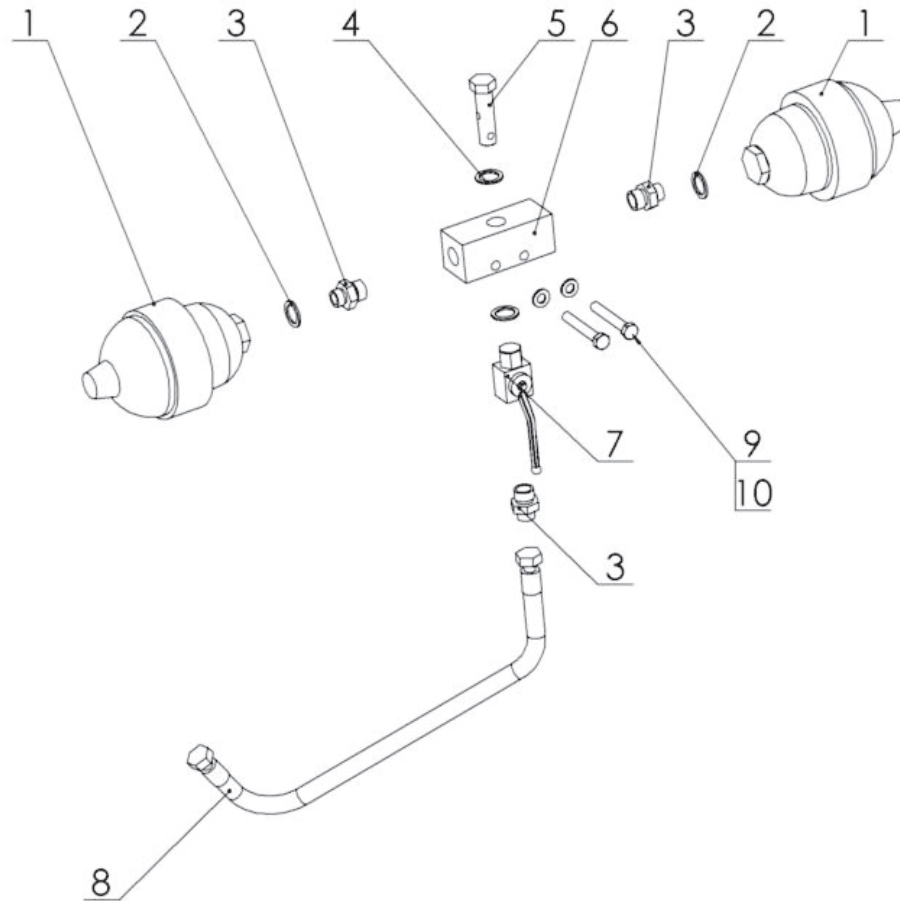


Fig. 11 Hydraulic accumulator unit ("C" assembly)

Table no. 11. Hydraulic accumulator unit ("C" assembly).

Item	Name of assembly or part	Part number or index	Qty
1	Hydraulic accumulator	H500R/LT	2
2	O-ring, PPM 18	24UPPM18	2
3	Straight coupling 1/2"/M18x1.5	24KP1/2 18	3
4	Copper washer 1/2"	21x18x1.5	2
5	Eye bolt 1/2"	G1/2" L=60	1
6	Valve block	sq.45+SC01	1
7	Ball valve	GE2-1/2"	1
8	Hydraulic hose	POD-HPR-000169	1
9	Bolt, M10x70	23S10/70	2
10	Round washer, 11	23P10 82005	2

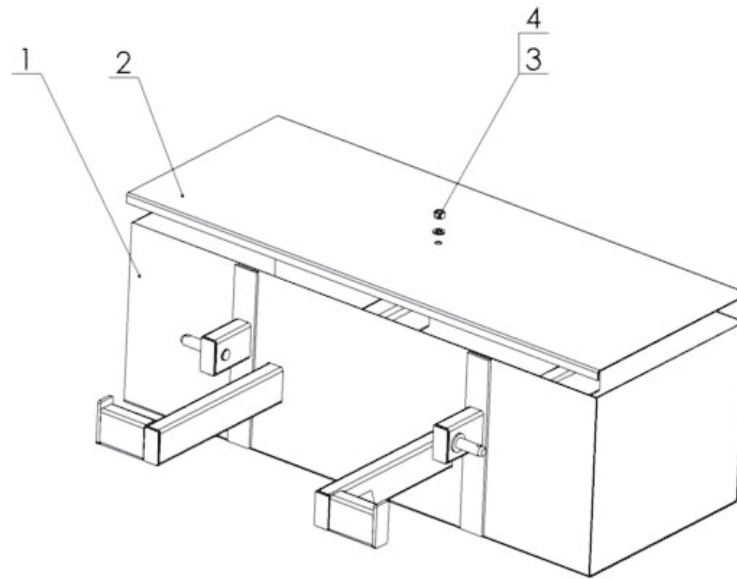


Fig. 12. Ballast box

Table no. 12. Ballast box

Item	Name of assembly or part	Part number or index		Qty
		Load capacity 650 kg	Load capacity 800 kg	
1	Welded container	OL.BL 650 01.00.00	OL.BL 800 01.00.00	1
2	Cover	OL.BL 650 00.00.02	OL.BL 800 00.00.02	1
3	Round washer 17	23P16OOC	23P16OOC	1
4	Self-locking nut, M16	23NS16OC	23NS16OC	1

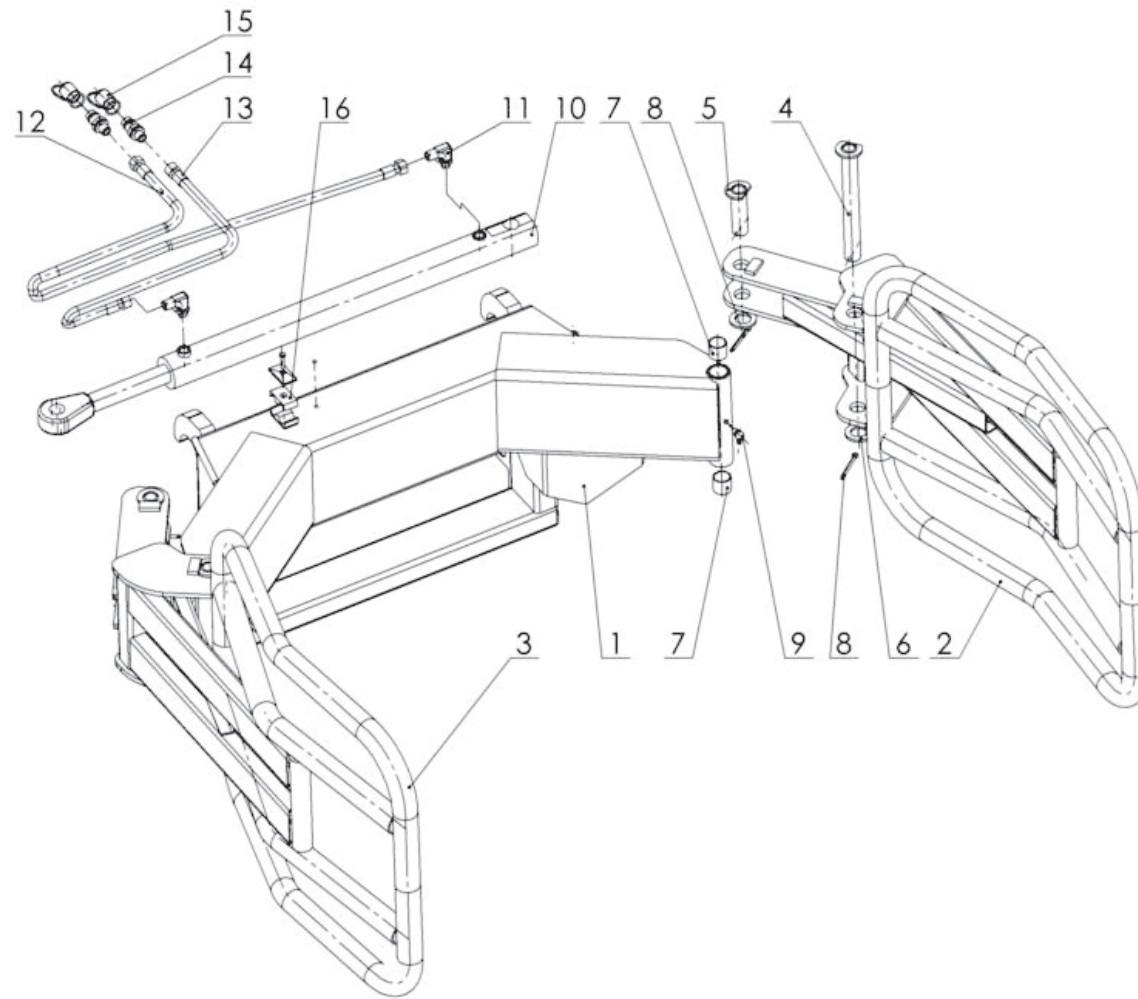


Fig. 13. Bale grip.

Table no. 13. Bale grip.

Item	Name of assembly or part	Part number or index		Qty
		Version SMS	Version EURO	
1	Welded frame	OL.CH 01.00.00.4	OL.CH 01.00.00.3E	1
2	Bale grip clamp L	OL.CH 02.00.00.2L	OL.CH 02.00.00.2L	1
3	Bale grip clamp P	OL.CH 02.00.00.2P	OL.CH 02.00.00.2P	1
4	Pin I	OL.CH 00.03.00	OL.CH 00.03.00	2
5	Pin II	OL.CH 00.04.00	OL.CH 00.04.00	2
6	Round washer 30	POD-ELZ-000507	POD-ELZ-000507	13
7	Self-lubricating bush	POD-LOZ-000021-1	POD-LOZ-000021-1	4
8	Cotter pin, 6.3x63	23Z6/63	23Z6/63	4
9	Grease nipple, M10x1.0, 45 deg. angle	23M10KAT45	23M10KAT45	2
10	Hydraulic actuator	24SCJ2F-36-520	24SCJ2F-36-520	1
11	Elbow coupling	24KK16/18	24KK16/18	2
12	Hydraulic hose	24PAA/111/10 L2600	24PAA/111/10 L-3200	1
13	Hydraulic hose	24PAA/111/10 L-2000	24PAA/111/10 L2600	1
14	Euro valve-plug, M18x1.5	24ZWE13-M18X1.5	24ZWE13-M18X1.5	2
15	Valve-plug cap	24ZWNE13	24ZWNE13	2
16	HBK fixture	POD-HPZ-000005-1	POD-HPZ-000005-1	1

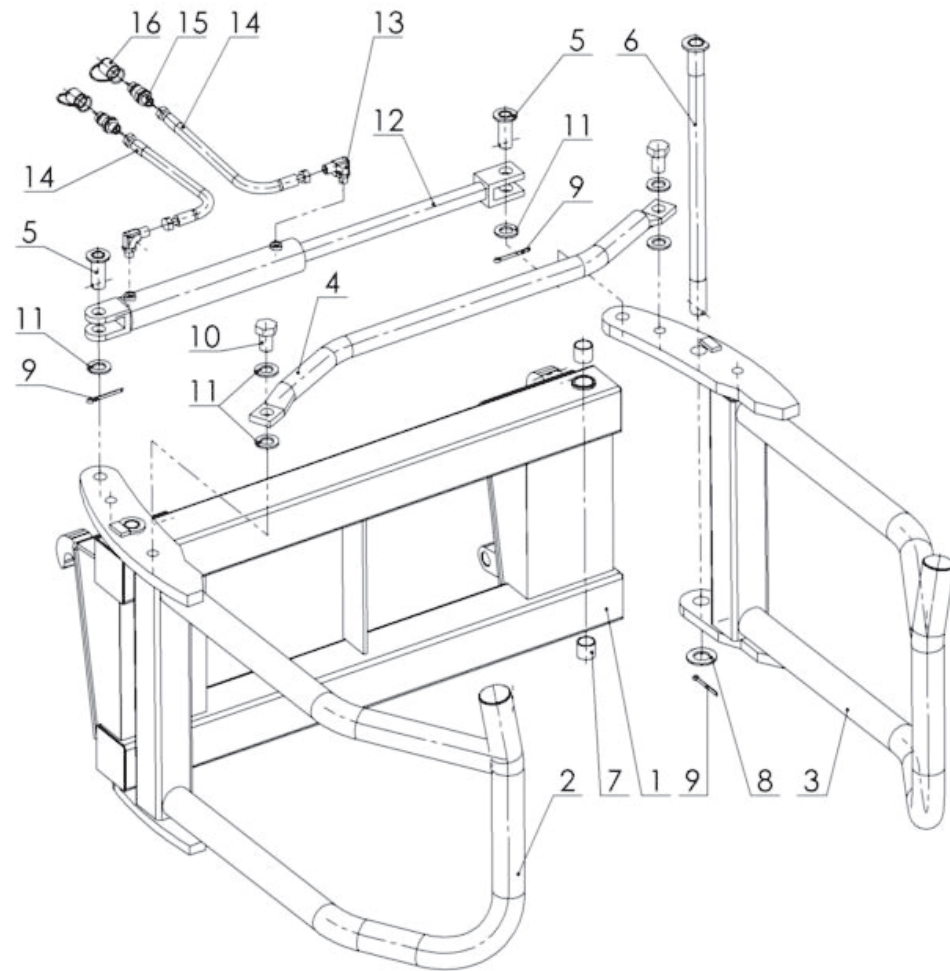


Fig. 14. Bale grip (version 2)

Table no. 14. Bale grip. (version 2)

Item	Name of assembly or part	Part number or index		Qty
		Version SMS	Version EURO	
1	Grip frame	OL.CH 2 01.00.00	OL.CH 2 01.00.00E	1
2	Grip arm, right	OL.CH 2 02.00.00.1P	OL.CH 2 02.00.00.1P	1
3	Grip arm, left	OL.CH 2 02.00.00.1L	OL.CH 2 02.00.00.1L	1
4	Spacer	OL.CH 2 00.00.03	OL.CH 2 00.00.03	1
5	Pin I, set	OL.CH 2 00.04.00	OL.CH 2 00.04.00	2
6	Pin II, set	OL.CH 2 00.05.00	OL.CH 2 00.05.00	2
7	Self-lubricating bush	POD-LOZ-000021-1	POD-LOZ-000021-1	4
8	Round washer 31	23P30OOC	23P30OOC	2
9	Cotter pin, 6.3x63	23Z6/63	23Z6/63	4
10	Bolt 24x50	POD-ELZ-000445	POD-ELZ-000445	2
11	Round washer 25	23P24OC	23P24OC	6
12	Hydraulic actuator	24SCJ1.63/36*250	24SCJ1.63/36*250	1
13	Straight coupling	POD-HKR-000040	POD-HKR-000040	2
14	Hydraulic hose	24PAA90/111/10 L-1500	24PA90A10-2000 10/13	2
15	Euro valve-plug, M18x1.5	24ZWE13-M18X1.5	24ZWE13-M18X1.5	2
16	Valve-plug cap	24ZWNE13	24ZWNE13	2

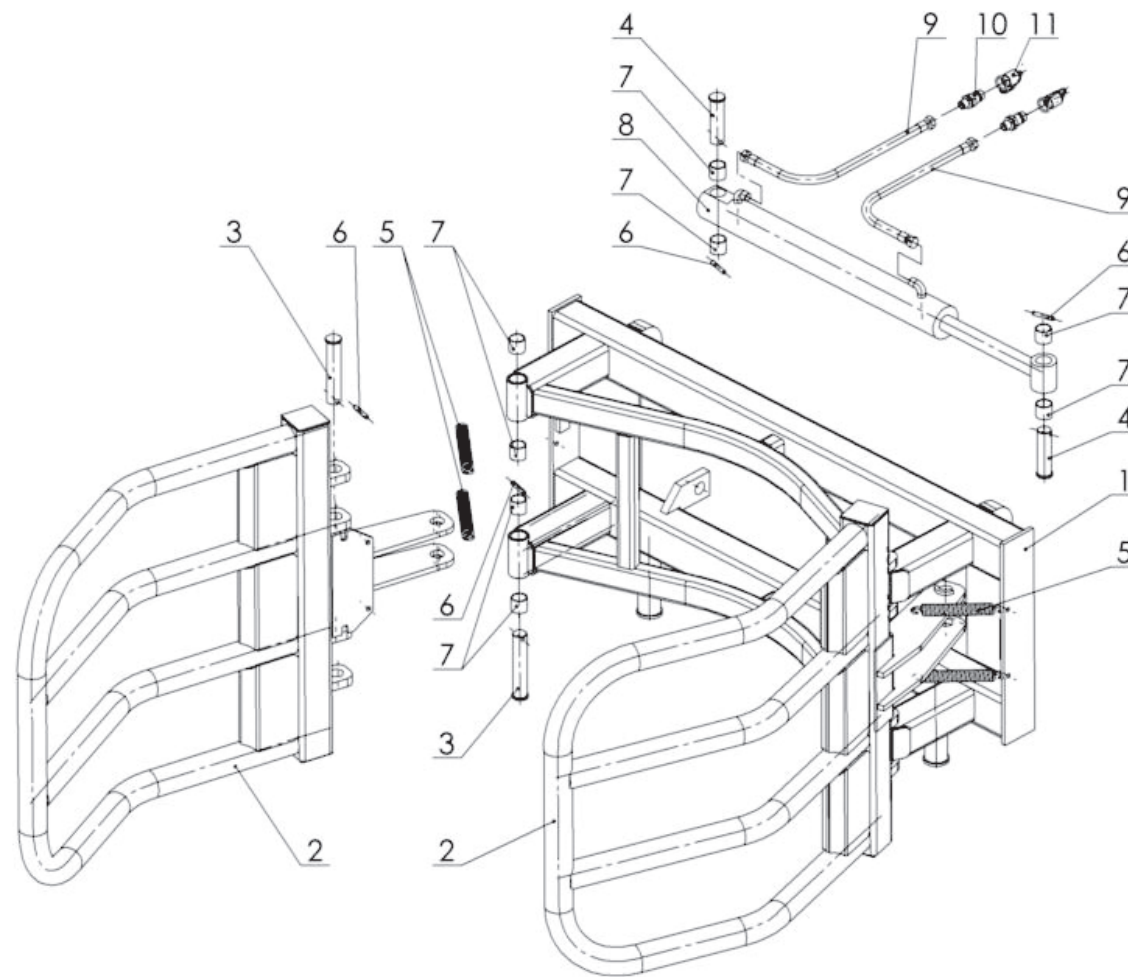


Fig. 15. Bale grip (version 3)

Table no. 15. Bale grip. (version 3)

Item	Name of assembly or part	Part number or index	Qty
1	Grip frame	OL.CH 3 01.00.00E	1
2	Clamping ring set	OL.CH 3 02.00.00	2
3	Clamping ring pin	OL.CH 3 00.00.03	2
4	Actuator pin	OL.CH 3 00.00.04	2
5	Spring	POD-SPR-000005	4
6	Spring pin	23K8/50	6
7	Self-lubricating bush	POD-LOZ-000112	12
8	Hydraulic actuator	POD-HSL-000028	1
9	Hydraulic hose	24PAA/111/10 L-2000	2
10	Euro valve-plug, M18x1.5	24ZWE13-M18X1.5	2
11	Valve-plug cap	24ZWNE13	2

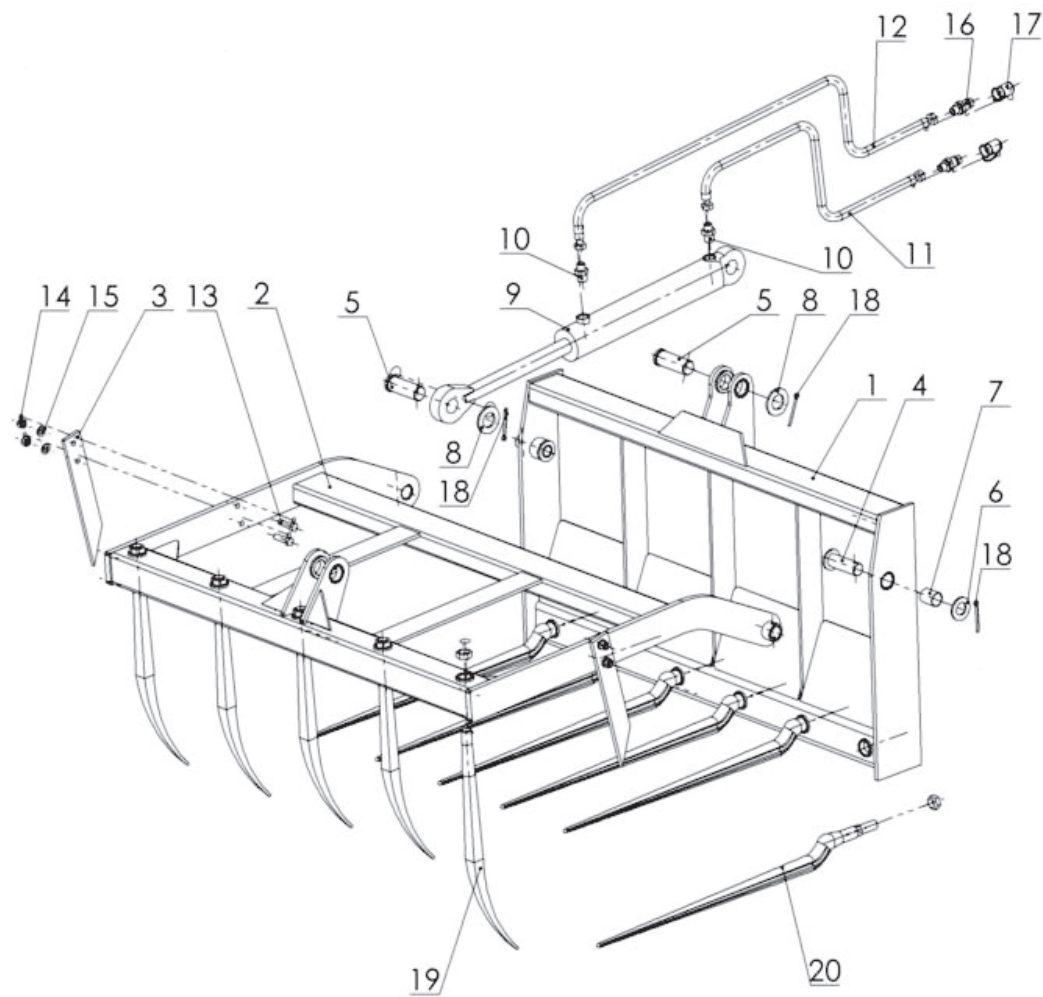


Fig. 16. Silage grip (version with 1 actuator)

Table no. 16. Silage grip (version with 1 actuator)

Item	Name of part or assembly	Part number or index						Qty
		Grip type						
		OL.Kr 1.2	OL.Kr 1.2 E	OL.Kr 1.5	OL.Kr 1.5 E	OL.Kr 1.8	OL.Kr 1.8 E	
1	Welded frame	OL.KR 1.2 01.00.00	OL.KR 1.2 01.00.00 E	OL.KR 1.5 01.00.00	OL.KR 1.5 01.00.00 E	OL.KR 1.8 01.00.00	OL.KR 1.8 01.00.00E	1
2	Movable frame	OL.KR 1.2 02.00.00	OL.KR 1.2 02.00.00	OL.KR 1.5 02.00.00	OL.KR 1.5 02.00.00	OL.KR 1.8 02.00.00	OL.KR 1.8 02.00.00	1
3	Side finger	OL.KR 00.00.03	OL.KR 00.00.03	OL.KR 00.00.03	OL.KR 00.00.03	OL.KR 00.00.03	OL.KR 00.00.03	2
4	Frame pin set	OL.KR 00.04.00	OL.KR 00.04.00	OL.KR 00.04.00	OL.KR 00.04.00	OL.KR 00.04.00	OL.KR 00.04.00	2
5	Actuator pin	OL.KR 00.00.05	OL.KR 00.00.05	OL.KR 00.00.05	OL.KR 00.00.05	OL.KR 00.00.05	OL.KR 00.00.05	2
6	Round washer 31	23P30OOC	23P30OOC	23P30OOC	23P30OOC	23P30OOC	23P30OOC	2
7	Self-lubricating bush	POD-LOZ-000115	POD-LOZ-000115	POD-LOZ-000115	POD-LOZ-000115	POD-LOZ-000115	POD-LOZ-000115	2
8	Round washer 36	23P36OOC	23P36OOC	23P36OOC	23P36OOC	23P36OOC	23P36OOC	2
9	Hydraulic actuator	24SCJ2F63/36/320Z	24SCJ2F63/36/320Z	24SCJ2F63/36/320Z	24SCJ2F63/36/320Z	24SCJ2F63/36/320Z	24SCJ2F63/36/320Z	1
10	Straight coupling	24KP22/18	24KP22/18	24KP22/18	24KP22/18	24KP22/18	24KP22/18	2
11	Hydraulic hose	24PAA90/111/10 L-1500	24PA90A10-2000 10/13	24PAA90/111/10 L-1500	24PA90A10-2000 10/13	24PAA90/111/10 L-1500	24PA90A10-2000 10/13	1
12	Hydraulic hose	24PA90A10-2000 10/13	24PAA90-10-2500	24PA90A10-2000 10/13	24PAA90-10-2500	24PA90A10-2000 10/13	24PAA90-10-2500	1
13	Bolt, M12x45	23S12/45OC	23S12/45OC	23S12/45OC	23S12/45OC	23S12/45OC	23S12/45OC	4
14	Self-locking nut, M12	23NS12OC	23NS12OC	23NS12OC	23NS12OC	23NS12OC	23NS12OC	4
15	Round washer 13	23P12OC	23P12OC	23P12OC	23P12OC	23P12OC	23P12OC	4
16	Euro valve-plug	24ZWE13-M18X1.5	24ZWE13-M18X1.5	24ZWE13-M18X1.5	24ZWE13-M18X1.5	24ZWE13-M18X1.5	24ZWE13-M18X1.5	2

17	Valve-plug cap	24ZWNE13	24ZWNE13	24ZWNE13	24ZWNE13	24ZWNE13	24ZWNE13	2
18	Cotter pin 6.3x63	23Z6/63	23Z6/63	23Z6/63	23Z6/63	23Z6/63	23Z6/63	4
19	Bent finger	25PW (5 pcs)	25PW (5 pcs)	25PW (6 pcs)	25PW (6 pcs)	25PW (8 pcs)	25PW (8 pcs)	5, 6, 8
20	Straight finger	25PWW880 (6 pcs)	25PWW880 (6 pcs)	25PWW880 (7 pcs)	25PWW880 (7 pcs)	25PWW880 (9 pcs)	25PWW880 (9 pcs)	6, 7, 9

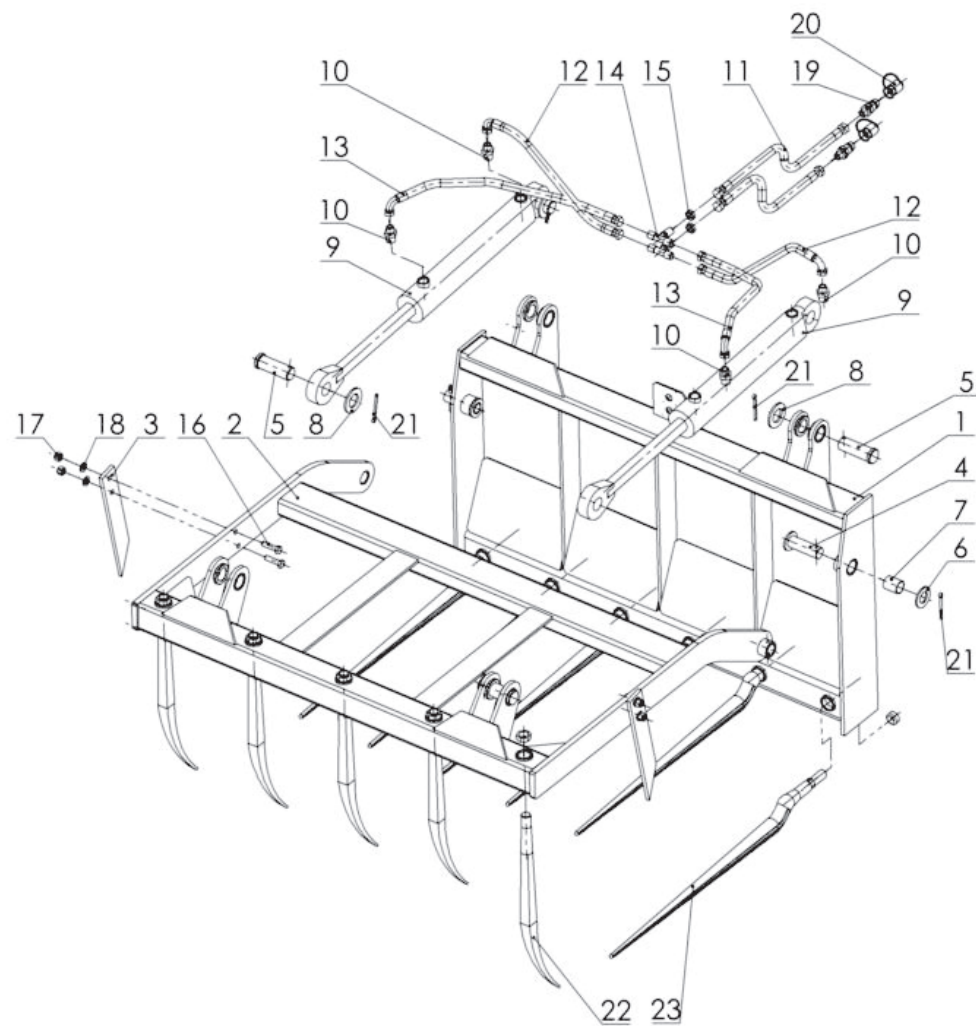


Fig. 17. Silage grip (version with 2 actuators)

Table no. 17. Silage grip (version with 2 actuators)

Item	Name of part or assembly	Part number or index						Qty
		Grip type						
		OL.Kr 2 1.2	OL.Kr 2 1.2 E	OL.Kr 2 1.5	OL.Kr 2 1.5 E	OL.Kr 2 1.8	OL.Kr 2 1.8 E	
1	Welded frame	OL.KR 2 1.2 01.00.00	OL.KR 2 1.2 01.00.00E	OL.Kr 2 1.5 01.00.00	OL.Kr 2 1.5 01.00.00E	OL.Kr 2 1.8 01.00.00	OL.Kr 2 1.8 01.00.00E	1
2	Movable frame	OL.Kr 2 1.2 02.00.00	OL.Kr 2 1.2 02.00.00	OL.Kr 2 1.5 02.00.00	OL.Kr 2 1.5 02.00.00	OL.Kr 2 1.8 02.00.00	OL.Kr 2 1.8 02.00.00	1
3	Side finger	OL.KR 00.00.03	OL.KR 00.00.03	OL.KR 00.00.03	OL.KR 00.00.03	OL.KR 00.00.03	OL.KR 00.00.03	2
4	Frame pin set	OL.KR 00.04.00	OL.KR 00.04.00	OL.KR 00.04.00	OL.KR 00.04.00	OL.KR 00.04.00	OL.KR 00.04.00	2
5	Actuator pin	OL.KR 00.00.05	OL.KR 00.00.05	OL.KR 00.00.05	OL.KR 00.00.05	OL.KR 00.00.05	OL.KR 00.00.05	4
6	Round washer 31	23P30OOC	23P30OOC	23P30OOC	23P30OOC	23P30OOC	23P30OOC	2
7	Self-lubricating bush	POD-LOZ-000115	POD-LOZ-000115	POD-LOZ-000115	POD-LOZ-000115	POD-LOZ-000115	POD-LOZ-000115	2
8	Round washer 36	23P36OOC	23P36OOC	23P36OOC	23P36OOC	23P36OOC	23P36OOC	4
9	Hydraulic actuator	24SCJ2F63/36/320Z	24SCJ2F63/36/320Z	24SCJ2F63/36/320Z	24SCJ2F63/36/320Z	24SCJ2F63/36/320Z	24SCJ2F63/36/320Z	2
10	Straight coupling	24KP22/18	24KP22/18	24KP22/18	24KP22/18	24KP22/18	24KP22/18	4
11	Hydraulic hose	24PAA10-1500 10/13	24PAA/111/10 L-2000	24PAA10-1500 10/13	24PAA/111/10 L-2000	24PAA10-1500 10/13	24PAA/111/10 L-2000	2
12	Hydraulic hose	POD-HPR-000233	POD-HPR-000233	POD-HPR-000233	POD-HPR-000233	POD-HPR-000233	POD-HPR-000233	2
13	Hydraulic hose	24PAA90/111/10- 700	24PAA90/111/10- 700	24PAA90/111/10- 700	24PAA90/111/10- 700	24PAA90/111/10- 700	24PAA90/111/10- 700	2
14	Partition tee- connector	24KZTG18/18/18	24KZTG18/18/18	24KZTG18/18/18	24KZTG18/18/18	24KZTG18/18/18	24KZTG18/18/18	2
15	Locknut	24P18/1.5	24P18/1.5	24P18/1.5	24P18/1.5	24P18/1.5	24P18/1.5	2
16	Bolt, M12x45	23S12/45OC	23S12/45OC	23S12/45OC	23S12/45OC	23S12/45OC	23S12/45OC	4

17	Self-locking nut, M12	23NS12OC	23NS12OC	23NS12OC	23NS12OC	23NS12OC	23NS12OC	4
18	Round washer 13	23P12OC	23P12OC	23P12OC	23P12OC	23P12OC	23P12OC	4
19	Euro valve-plug	24ZWE13-M18X1.5	24ZWE13-M18X1.5	24ZWE13-M18X1.5	24ZWE13-M18X1.5	24ZWE13-M18X1.5	24ZWE13-M18X1.5	2
20	Valve-plug cap	24ZWNE13	24ZWNE13	24ZWNE13	24ZWNE13	24ZWNE13	24ZWNE13	2
21	Cotter pin, 6.3x63	23Z6/63	23Z6/63	23Z6/63	23Z6/63	23Z6/63	23Z6/63	6
22	Bent finger	25PW (5 pcs)	25PW (5 pcs)	25PW (6 pcs)	25PW (6 pcs)	25PW (8 pcs)	25PW (8 pcs)	5, 7, 9
23	Straight finger	25PWW880 (6 pcs)	25PWW880 (6 pcs)	25PWW880 (7 pcs)	25PWW880 (7 pcs)	25PWW880 (9 pcs)	25PWW880 (9 pcs)	5, 7, 9

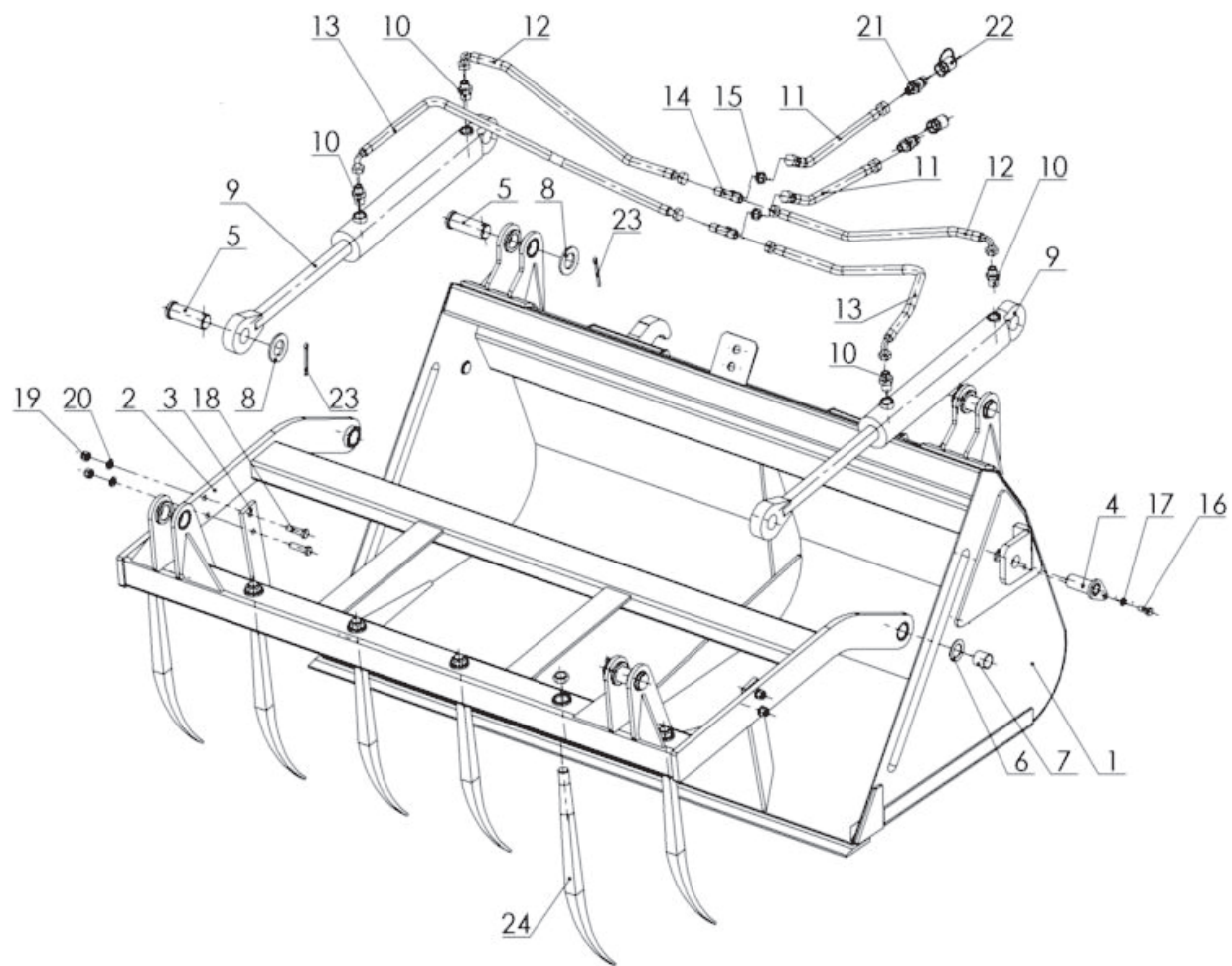


Fig. 18. Grip bucket

Table no. 18. Grip bucket.

Item	Name of part or assembly	Part number or index				Qty
		Bucket type				
		OL.LCh 1.5	OL.LCh 1.5 E	OL.LCh 1.8	OL.LCh 1.8E	
1	Welded bucket	OL.LCH 1.5 01.00.00.1	OL.LCH 1.5 01.00.00.1E	OL.LCH 1.8 01.00.00.1	OL.LCH 1.8 01.00.00.1E	1
2	Movable frame	OL.LCH 1.5 02.00.00E	OL.LCH 1.5 02.00.00E	OL.LCH 1.8 02.00.00E	OL.LCH 1.8 02.00.00E	1
3	Side finger	OL.KR 00.00.03	OL.KR 00.00.03	OL.KR 00.00.03	OL.KR 00.00.03	2
4	Frame pin set	OL.LCh 00.05.00	OL.LCh 00.05.00	OL.LCh 00.05.00	OL.LCh 00.05.00	2
5	Actuator pin	OL.Kr 00.00.05	OL.Kr 00.00.05	OL.Kr 00.00.05	OL.Kr 00.00.05	4
6	Special washer	OL.LCh 00.00.24	OL.LCh 00.00.24	OL.LCh 00.00.24	OL.LCh 00.00.24	2
7	Self-lubricating bush	POD-LOZ-000112	POD-LOZ-000112	POD-LOZ-000112	POD-LOZ-000112	2
8	Round washer 37	23P36OOC	23P36OOC	23P36OOC	23P36OOC	4
9	Hydraulic actuator	24SCJ2F63/36/320Z	24SCJ2F63/36/320Z	24SCJ2F63/36/320Z	24SCJ2F63/36/320Z	2
10	Straight coupling	24KP22/18	24KP22/18	24KP22/18	24KP22/18	4
11	Hydraulic hose	24PAA10-1500 10/13	24PAA/111/10 L-2000	24PAA10-1500 10/13	24PAA/111/10 L-2000	2
12	Hydraulic hose	24PAA90/111/10-700	24PAA90/111/10-700	24PAA90/111/10 L-800	24PAA90/111/10 L-800	2
13	Hydraulic hose	24PA90A10-1050	24PA90A10-1050	24PAA90/111/10-L1100	24PAA90/111/10-L1100	2
14	Partition tee-connector	24KZTG18/18/18	24KZTG18/18/18	24KZTG18/18/18	24KZTG18/18/18	2
15	Locknut	24P18/1.5	24P18/1.5	24P18/1.5	24P18/1.5	2
16	Bolt, M10x25	23S10/25OC 8.8	23S10/25OC 8.8	23S10/25OC 8.8	23S10/25OC 8.8	2
17	Round washer 10.5	23P10 82005	23P10 82005	23P10 82005	23P10 82005	2
18	Bolt, M12x45	23S12/45OC	23S12/45OC	23S12/45OC	23S12/45OC	4
19	Self-locking nut, M12	23NS12OC	23NS12OC	23NS12OC	23NS12OC	4
20	Round washer 13	23P12OC	23P12OC	23P12OC	23P12OC	4
21	Euro valve-plug	24ZWE13-M18X1.5	24ZWE13-M18X1.5	24ZWE13-M18X1.5	24ZWE13-M18X1.5	2
22	Valve-plug cap	24ZWNE13	24ZWNE13	24ZWNE13	24ZWNE13	2

23	Cotter pin 6.3x63	23Z6/63	23Z6/63	23Z6/63	23Z6/63	4
24	Bent finger	25PW (6 pcs)	25PW (6 pcs)	25PW (8 pcs)	25PW (8 pcs)	6, 8

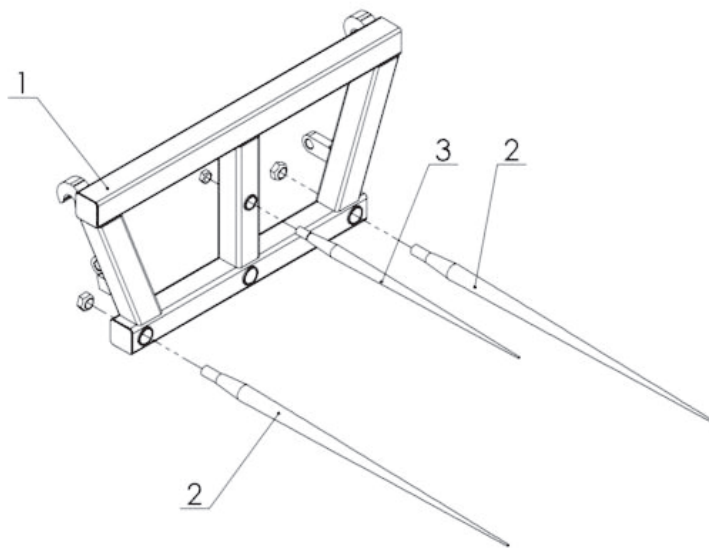


Fig. 19 Bale fork.

Table no. 19. Bale fork.

Item	Name of assembly or part	Part number or index		Qty
		Version SMS	Version EURO	
1	Fork frame	OL.WB 01.00.00	OL.WB 01.00.00E	1
2	Straight finger L=1100	POD-ODL-000003-1	POD-ODL-000003-1	2
3	Straight finger L=800	POD-ODL-000002-1	POD-ODL-000002-1	1

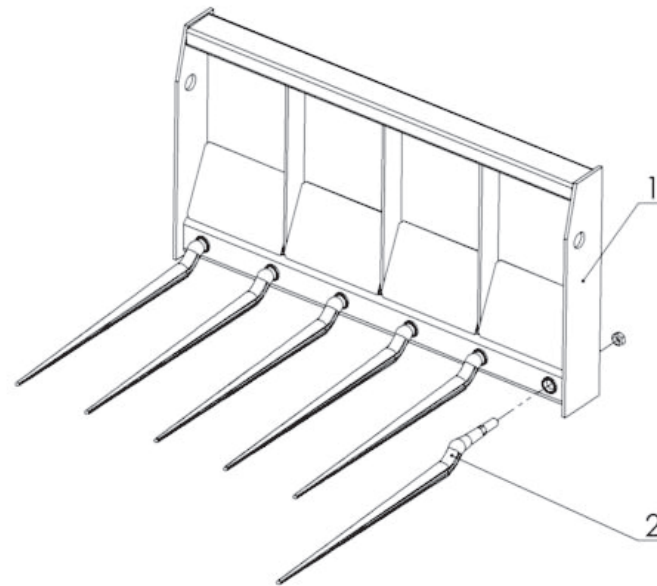


Fig. 20. Manure fork.

Table no. 20. Manure fork.

Item	Name of part or assembly	Part number or index						Qty
		Fork type						
		OŁ.Wo 1.2	OŁ.Wo 1.2 E	OŁ.Wo 1.5	OŁ.Wo 1.5 E	OŁ.Wo 1.8	OŁ.Wo 1.8 E	
1	Welded frame	OL.WO 1.2 01.00.00	OL.WO 1.2 01.00.00E	OL.WO 1.5 01.00.00	OL.WO 1.5 01.00.00E	OL.WO 1.8 01.00.00	OL.WO 1.8 01.00.00E	1
2	Straight finger	25PWW880 (6 pcs)	25PWW880 (6 pcs)	25PWW880 (7 pcs)	25PWW880 (7 pcs)	25PWW880 (9 pcs)	25PWW880 (9 pcs)	6, 7, 9

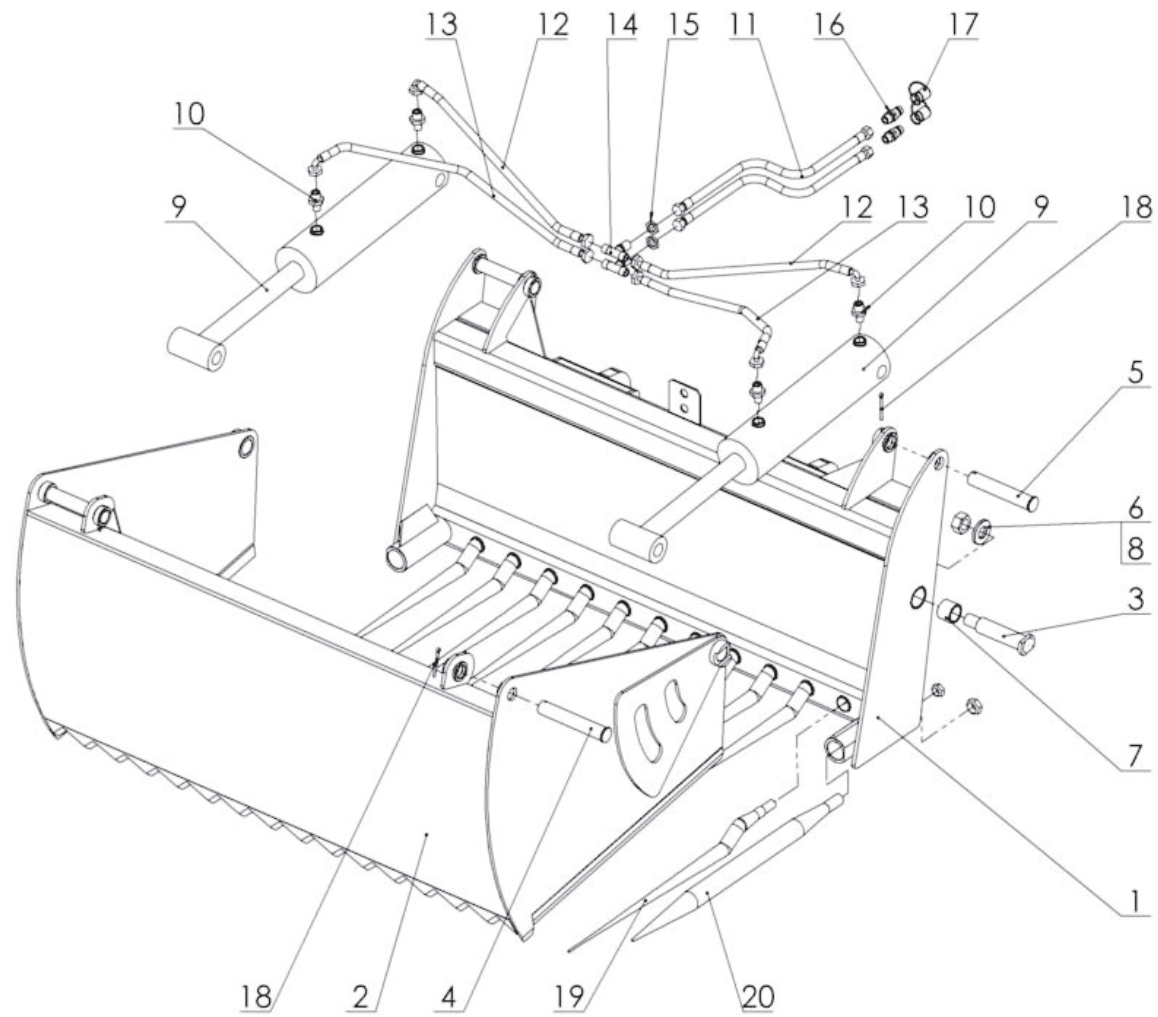


Fig. 21. Silage cutter.

Table no. 21. Silage cutter.

Item	Name of part or assembly	Part number or index				Qty
		Cutter type				
		OL.Wk 1.2	OL.Wk 1.2 E	OL.Wk 1.5	OL.Wk 1.5 E	
1	Fixed frame	OL.WK 1.2 01.00.00	OL.WK 1.2 01.00.00E	OL.WK 1.5 01.00.00	OL.WK 1.5 01.00.00E	1
2	Movable frame	OL.WK 1.2 02.00.00.1	OL.WK 1.2 02.00.00.1	OL.WK 1.5 02.00.00.1	OL.WK 1.5 02.00.00.1	1
3	Frame pin	OL.WK 1.2 00.00.03.2	OL.WK 1.2 00.00.03.2E	OL.WK 00.00.03.1	OL.WK 00.00.03.1	2
4	Actuator pin I	OL.WK 1.2 00.00.04.1	OL.WK 1.2 00.00.04.1	OL.WK 00.00.04	OL.WK 00.00.04	2
5	Actuator pin II	OL.WK 1.2 00.00.05	OL.WK 1.2 00.00.05	OL.WK 00.00.05	OL.WK 00.00.05	2
6	Washer	OL.WK 00.00.06	OL.WK 00.00.06	OL.WK 00.00.06	OL.WK 00.00.06	2
7	Self-lubricating bush	25T40/50/40	25T40/50/40	25T40/50/40	25T40/50/40	4
8	Self-locking nut M30	POD-ELZ-000042-1	POD-ELZ-000042-1	POD-ELZ-000042-1	POD-ELZ-000042-1	2
9	Hydraulic actuator	POD-HSL-000064	POD-HSL-000064	24SCJ-S43-110/50/350	24SCJ-S43-110/50/350	2
10	Straight coupling	POD-HKR-000084	POD-HKR-000084	POD-HKR-000084	POD-HKR-000084	4
11	Hydraulic hose	POD-HPR-000152	POD-HPR-000356	POD-HPR-000152	POD-HPR-000356	2
12	Hydraulic hose	POD-HPR-000376	POD-HPR-000376	POD-HPR-000125	POD-HPR-000125	2
13	Hydraulic hose	POD-HPR-000355	POD-HPR-000355	POD-HPR-000151	POD-HPR-000151	2
14	Partition tee-connector	24KT22/22/22	24KT22/22/22	24KT22/22/22	24KT22/22/22	2
15	Locknut	24P22/1.5	24P22/1.5	24P22/1.5	24P22/1.5	2
16	Euro valve-plug	24ZWE13	24ZWE13	24ZWE13	24ZWE13	2
17	Valve-plug cap	24ZWNE13	24ZWNE13	24ZWNE13	24ZWNE13	2
18	Cotter pin	23Z6/63	23Z6/63	23Z6/63	23Z6/63	4
19	Straight finger	POD-ODL-000001-1 (7 pcs)	POD-ODL-000001-1 (7 pcs)	POD-ODL-000001-1 (11 pcs)	POD-ODL-000001-1 (11 pcs)	7, 11
20	Straight finger, thick	25PWW820	25PWW820	25PWW820	25PWW820	2

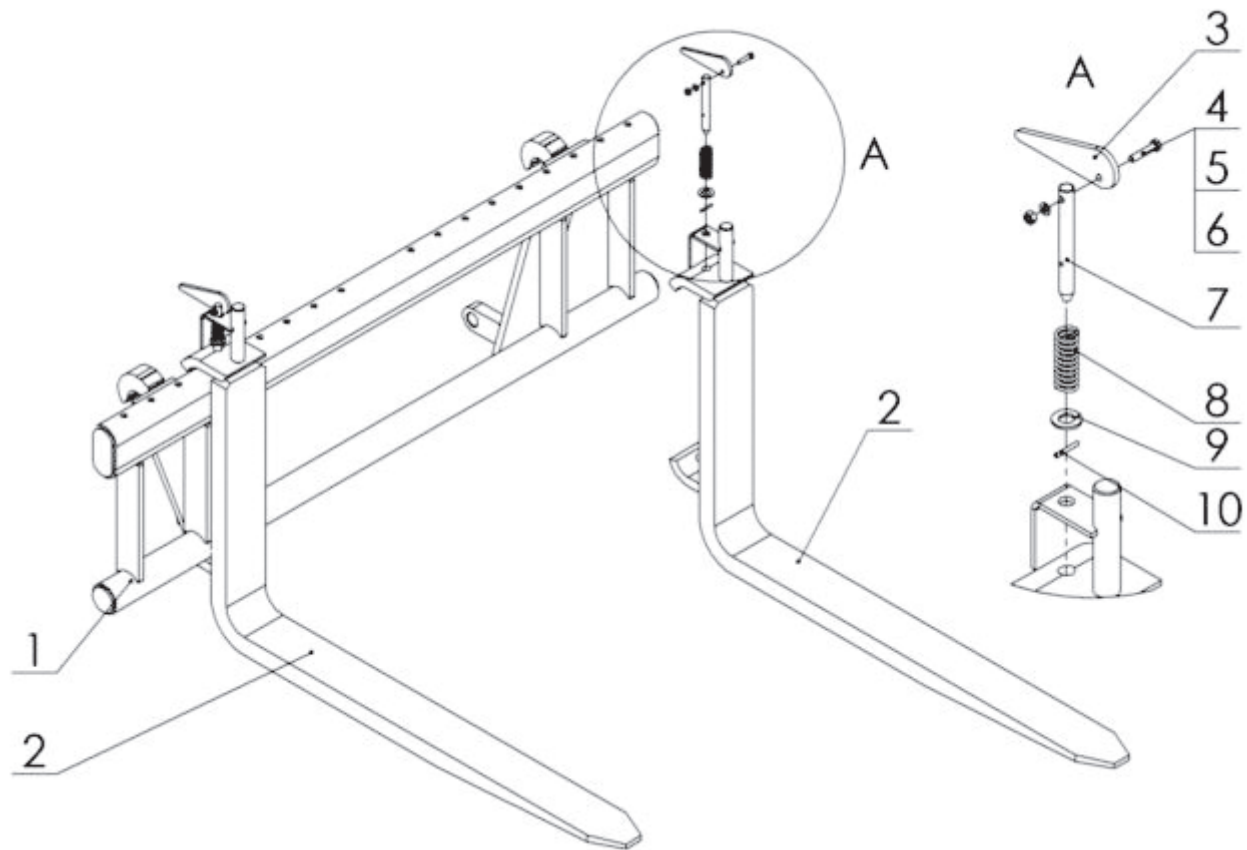


Fig. 22. Pallet slide fork.

Table no. 22. Pallet slide fork.

Item	Name of part or assembly	Part number or index				Qty
		Fork type				
		OL.WP1.0	OL.WP1.0E	OL.WP1.2	OL.WP1.2E	
1	Fork frame	OL.RT-01.00.00.1	OL.RE-01.00.00.1	OL.RT-01.00.00.1	OL.RE-01.00.00.1	1
2	Welded clamp	OL.LW1.0-01.01.00	OL.LW1.0-01.01.00	OL.LW1.2-01.01.00	OL.LW1.2-01.01.00	2
3	Lock-off lever	OL.LW-01.00.02	OL.LW-01.00.02	OL.LW-01.00.02	OL.LW-01.00.02	2
4	Bolt, M6x35	23S6/35OC	23S6/35OC	23S6/35OC	23S6/35OC	2
5	Round washer 6.4	23P6OOC	23P6OOC	23P6OOC	23P6OOC	2
6	Nut, M6	23NS6OC	23NS6OC	23NS6OC	23NS6OC	2
7	Lock axis	OL.LW-01.00.03	OL.LW-01.00.03	OL.LW-01.00.03	OL.LW-01.00.03	2
8	Spring	23S3/22/63	23S3/22/63	23S3/22/63	23S3/22/63	2
9	Round washer 15	23P14OC	23P14OC	23P14OC	23P14OC	2
10	Spring pin	23K4/30	23K4/30	23K4/30	23K4/30	2